

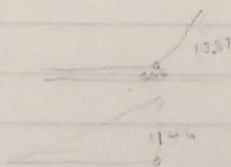
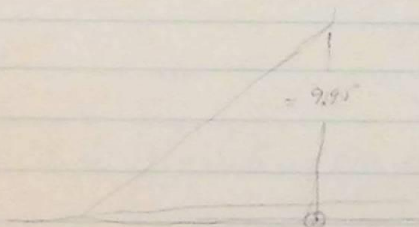
(84)

Measure of excavation between  
Stas 38 and 39

Center cut at 38

.77

78+	9.95	hill slopes 1 ft in 4 both ways
+	0.68	8 ft 6 left = 13.73. 1 ft level
38+63	11.46	4 3 ft R = 1.93 rising 1 ft
8+86	10.78	4 10 ft R = 6.00 1 ft = 0.33 (in four)



B 36

grade bit  
4990.34

482

4969.93

+63

4977.12

Sta	L	Center	R
B 34+15	525 A	496 A	3.49 A
			284 284 7.42